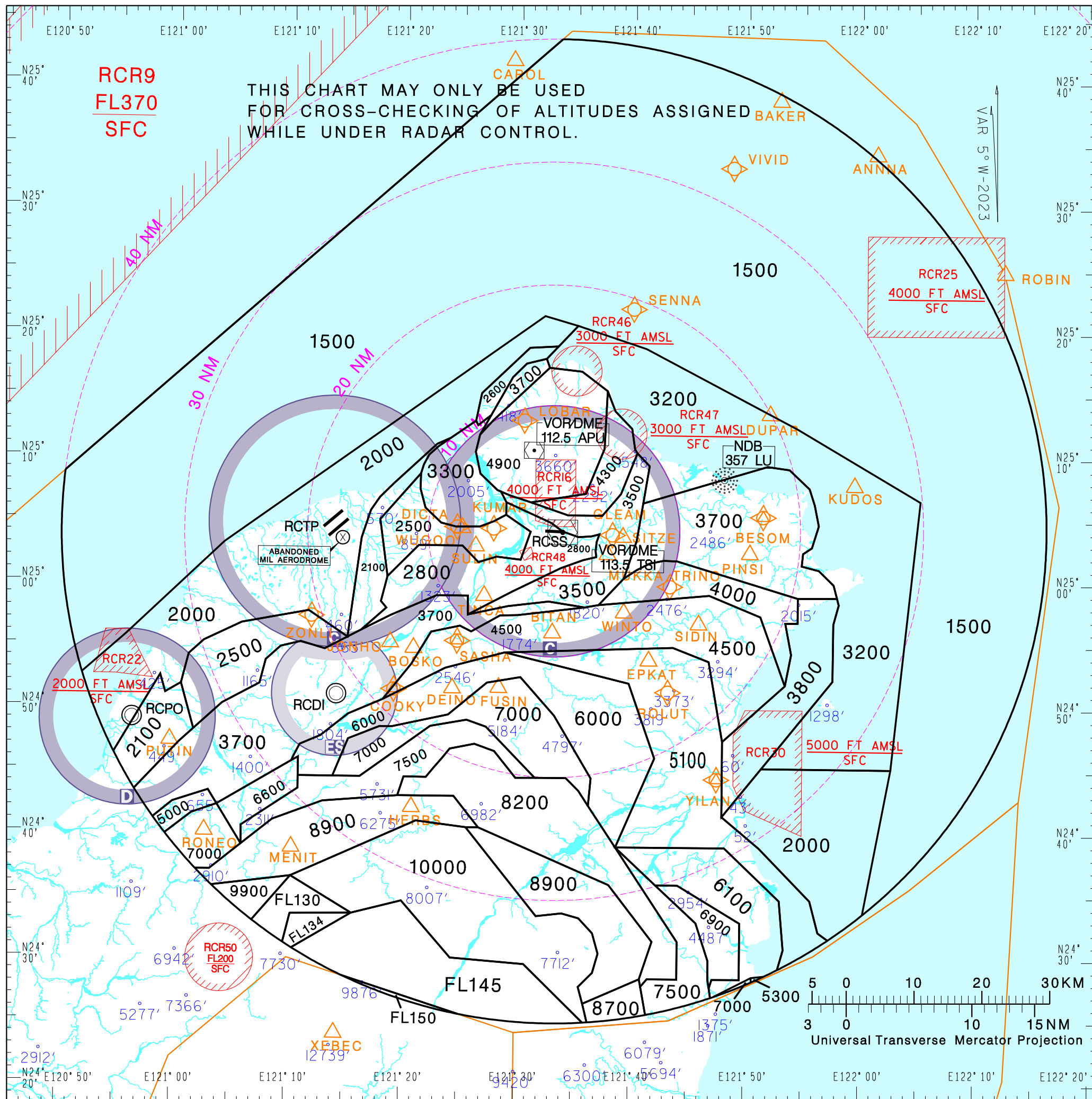


航管監視最低高度圖
ATC Surveillance
Minimum Altitude Chart

AD ELEV. Trans Level: FL130
RCSS 18 FT Trans Alt: 11,000'

TAIPEI APP 125.1 119.7 119.6 228.0 251.3	SONGSHAN TOWER 118.1 236.6 ATIS 127.4 341.0
---	--

臺北/松山機場
Taipei/Songshan Aerodrome



- NOTE**
- Distance circles are centred on the RCSS ARP(250411N 1213309E).
 - Minimum altitudes are calculated taking into account of minimum clearance above terrain/obstacles. Radar control service cannot be provided to aircraft below the applicable minimum. Aircraft at designated altitude in relevant sector is not assured of radar contact.
 - Altitudes, Levels, Heights are in feet.
 - Only significant spot heights are shown.
 - LOSS OF COMMUNICATION
 - SQUAWK 7600 immediately, and
 - follow AIP ENR 1.6.4 "Radio Communication Failure Procedures."

CHANGES: RECHART